

Security Analyst (IT)



WHO WE ARE

For nearly 5 million people with diabetes in the UK, there's no day off. At Diabetes UK, we fight day in, day out for better care, treatment and support. We won't stop until diabetes can do no harm. With more people than ever living with diabetes and millions more at risk of developing type 2, our work has never been more needed.

We can't do any of this without you. Our staff are passionate and determined about helping everyone affected by diabetes. For over 85 years, they've been behind vital policy changes, as well as new treatments and technologies to make living with diabetes easier every day. But there's more to do. And you can be part of it.

We're a really diverse bunch and we recognise and respect your value as an individual.

As well as helping people with diabetes, you'll be part of one of the top 30 Best

UK Charities to Work For, and one of the top 75 Best Large Companies in London.

Tackling inequality is part of our mission, and we're committed to being a diverse and inclusive organisation, for all of our people and volunteers. We have a friendly and inclusive culture, with a range of staff networks and ways to get involved. You can find out more about our approach to equity, diversity and inclusion in our strategy here [EDI Strategy Branded version 22 March 2023.pdf](#).

Our vision is a world where diabetes can do no harm. Join us today, and together, we can make that a reality.



JOB DESCRIPTION

Role title: IT Security Analyst

Contract type: Permanent

Hours: 35 hours

Band: 5

Key relationships (internal and external): IT Operations & Projects Manager, Infrastructure & Service Desk Lead, Information Governance, Data and Information Systems teams, Digital, IT Managed Service Providers, Security Operations Centre (SOC), External Auditors and Certification Providers

Key focus of the role:

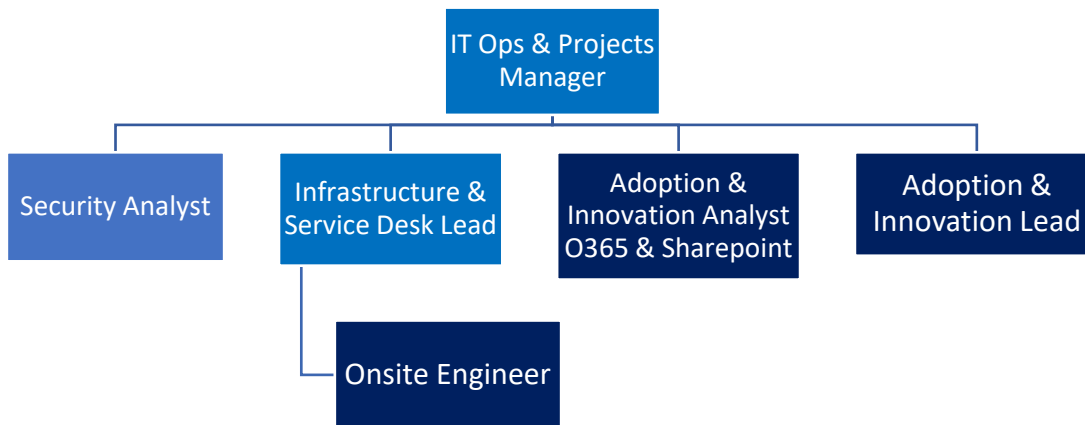
The IT Security Analyst provides specialist, hands-on information security capability for Diabetes UK. The role is responsible for the design, implementation and operation of technical security controls, ensuring services are secure by design and compliant with legal, regulatory and organisational requirements.

The post works closely with IT Operations and Information Governance colleagues to reduce organisational risk, support safe delivery of change and remove reliance on informal knowledge or role-stretching elsewhere in IT.

In addition, this customer facing role has responsibility for advising staff and volunteers on compliance issues, as well as conducting information security reviews on our assets across the organisation. This new role is designed to ensure that Diabetes UK has a robust Information Security Framework in place.

Directorate and team

This role sits in the [Information Technology Team](#) in the [Corporate Services Directorate](#)



Person specification

All jobs at Diabetes UK are based on

- The key activities you'll undertake and
- The skills, knowledge, experience and behaviours you need to be successful in this role

You will be able to:

- Design, implement and operate technical information security controls across systems, endpoints and cloud services.
- Manage day-to-day security operations, including monitoring, vulnerability management, pen testing, network scanning, endpoint security and incident response
- Serve as a subject matter expert for Information Security queries and assist the Information Governance Team as and when the need arises
- Act as the specialist escalation point for security threats, vulnerabilities and incidents.
- Lead the technical delivery of Cyber Essentials Plus, PCI-DSS and NHS DSP Toolkit requirements. Support audits, assurance activity and remediation tracking
- Maintain and contribute to the technical elements of the Information Asset Register.
- Provide security input to IT and digital projects to ensure solutions are secure by design.
- Investigate, record and report security incidents and near misses.
- Provide clear, practical guidance to staff and volunteers on information security matters.
- Responsible for the security element of the Diabetes UK IT Business Continuity plan
- Promote a positive and proportionate security culture across the organisation

- Responsibility of some of our Information Security processes, reviewing their effectiveness as Process Owner (strategical/tactical) and driving continual improvement based on Audit findings, Security Risks, Security Incidents and changes of regulatory requirements
- Reporting to the Information Governance Board and to the Keeping Safe, Legal & Healthy compliance risk management framework on information security risks

You will have experience in:

- Information Security, ideally within charity sector, local government or NHS organisation, with fundraising or other direct marketing experience
- Working within security and compliance frameworks such as Cyber Essentials Plus and DSP Toolkit
- Working knowledge of Microsoft Office 365/Azure security features to ensure maximum compliance to security standards is achieved
- Information security management frameworks, such as ISO 27001 and Cyber Essentials Plus
- Development of policy and guidelines that support best practice in information governance,
- Compliance monitoring and auditing
- Information Asset Register Management
- Development and monitoring of Information Security Policies

You will have skills in:

- Microsoft Defender and Microsoft Sentinel
- Darktrace
- Security monitoring through a SOC model
- Vulnerability management tooling (e.g. Qualys or equivalent)
- Endpoint, network and cloud security controls
- Communicating technical risk in plain English

You will have knowledge:

- Information security principles and secure-by-design practices
- Data protection and information governance requirements
- Risk-based security decision-making
- Incident response and continuous improvement

The best person for this job will be (behaviours):

I make change happen

- Collaborative and strong team player – proactively seeks solutions to progress Strategic Programmes and remove obstacles. Aligns to ambitions of charity and gets things done. Delivers on commitments. Strong evidence of proactively enabling funding of work.
- Demonstrate sound technical diagnostic skills
- Evidences a commitment to EDI and tackling inequalities with the courage and confidence to enable team to stretch themselves in these areas
- Takes accountability. Doesn't avoid tough decisions

I put people first

- Balances security requirements with the needs of staff, volunteers and people with diabetes.
- Respects colleagues and is kind. Sees positive intent in those they work with. An enabling and empowering colleague

I keep things simple

- Designs controls that are clear, usable and sustainable.
- Makes decisions and empowers others to make decisions within and across teams.

I am driven to know more

- Keeps up to date with emerging threats and continuously develops expertise.
- Seeks external insights to shape our future work and sees reality for what it is and ambitious for the future of diabetes.
- Reflective approach and supports others to do the same.

Qualifications/professional membership (if applicable):

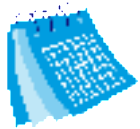
- Degree or equivalent experience in information security or IT
- Security qualifications such as CISMP, CISM, CISA or equivalent (desirable).
- Security, Compliance and Identity Fundamentals (SC-900)
- Microsoft Sentinel, Microsoft Defender XDR, incident response, threat hunting (desirable)
- Passionate about making a difference to people living with diabetes

BENEFITS

We know you do more than just work. And that means you might be a parent, carer, friend, volunteer or partner.

We want to make sure that we can help you create a good balance between work and the other parts of your life.

And one way we do that is with benefits we offer you.



Annual leave

We want you to make sure you get time off to rest and relax. So, all full-time permanent employees get 25 days off a year, with bank holidays on top of this.



Connected working

We have adopted a 'connected working' way of working. This means that, for most roles, you are not required to work in an office location every day.



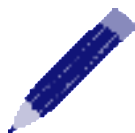
Pension

We enrol everyone into our pension and all new colleagues joining us will get information on the pension scheme. We make an employer contribution of at least 5%.



Healthcare

Our cash healthcare plan that allows you to claim back the cost of regular health appointments and treatment, like the dentist and optician.



Learning and development

We help you to continually develop and achieve your career goals, including offering a wide range of training which happens throughout the year.



Gym membership

We have a gym membership discount scheme through our cash healthcare plan provider. You can use this at a wide variety of gyms around the UK.



Our Networks

A range of active and supportive colleague networks such as the Pride network, Global Majority network and Women's network.



Early finish Friday

Early finish Friday and flexible working as part of our approach to activity-based working (not applicable to roles with fixed shift patterns).



Employee assistance programme

Employee assistance programme to give you support on any issues that come up in life.



Annual season ticket loan

Annual season ticket loan* (on completion of your probation period and if contract is permanent or longer than 12 months).



Cycle to work scheme

Cycle to work scheme.

Get in touch

Email recruitment@diabetes.org.uk

Call **0345 123 2399**

Visit diabetes.org.uk

Search **Diabetes UK** on Facebook, Twitter, YouTube and Instagram

