

Data Engineer (IT)



WHO WE ARE

For nearly 5 million people with diabetes in the UK, there's no day off. At Diabetes UK, we fight day in, day out for better care, treatment and support. We won't stop until diabetes can do no harm. With more people than ever living with diabetes and millions more at risk of developing type 2, our work has never been more needed.

We can't do any of this without you. Our staff are passionate and determined about helping everyone affected by diabetes. For over 85 years, they've been behind vital policy changes, as well as new treatments and technologies to make living with diabetes easier every day. But there's more to do. And you can be part of it.

We're a really diverse bunch and we recognise and respect your value as an individual.

As well as helping people with diabetes, you'll be part of one of the top 30 Best

UK Charities to Work For, and one of the top 75 Best Large Companies in London.

Tackling inequality is part of our mission, and we're committed to being a diverse and inclusive organisation, for all of our people and volunteers. We have a friendly and inclusive culture, with a range of staff networks and ways to get involved. You can find out more about our approach to equity, diversity and inclusion in our strategy here [EDI Strategy Branded version 22 March 2023.pdf](#).

Our vision is a world where diabetes can do no harm. Join us today, and together, we can make that a reality.



JOB DESCRIPTION

Role title: Data Engineer

Contract type: Permanent

Hours: 35

Band: 5

Key relationships (internal and external):

Internal: Data & Insights, IT Stakeholders, Infrastructure & IT Operations, Information Governance, Digital, Head of Transformation

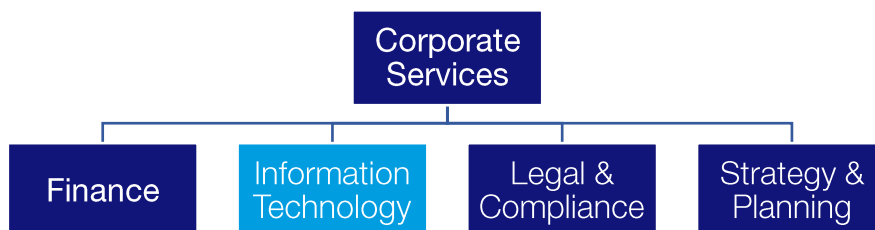
Key focus of the role: Diabetes UK is bringing people together to support those living with diabetes, prevent Type 2, advance research, and ultimately find a cure. High-quality data is central to achieving our mission. As the volume, complexity, and strategic importance of our data increase, this role supports the design, build, governance and optimisation of our modern data platform. Working under the direction of the lead Data Engineer, the data Engineer plays a key role in delivering reliable, secure and well governed data pipelines that enable analytics, reporting and responsible use of data across the organisation.

You will contribute hands-on engineering capability across ingestions, integrations, modelling and automation, while helping to embed strong engineering, documentation and governance practices as Diabetes UK continues to transition to fabric.

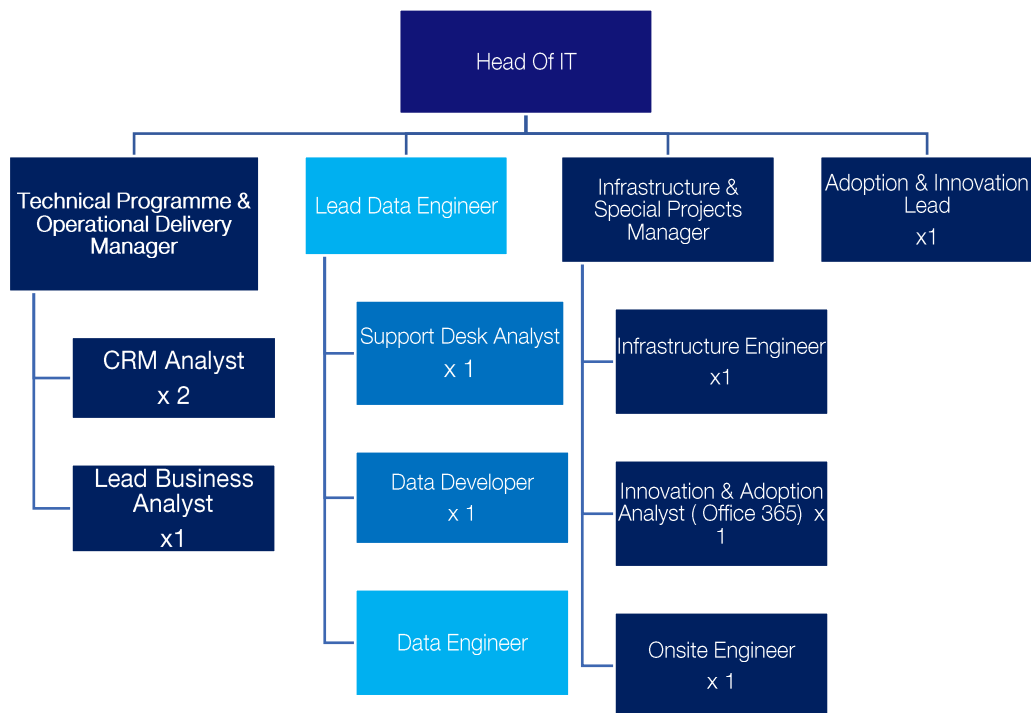
Directorate and team

This role sits in the [Information Technology](#) in the [Corporate Services Directorate](#)

[Department: IT](#)



Job and reporting Line



Person specification

All jobs at Diabetes UK are based on

- The key activities you'll undertake and
- The skills, knowledge, experience and behaviours you need to be successful in this role

You will be able to:

- Contribute to the design scalable ingestion and integration pipelines using Fabric and all the features it encapsulates.
- Develop, maintain, update and debug data pipelines using Fabric, being also adept with Azure Data Factory or Synapse pipelines.
- Work with the common data model and support its implementation in analytics and reporting
- Write & maintain SQL Python, PySpark and JSON -based transformations
- Follow change control & deployment processes using Azure DevOps, Git and CI/CD pipelines.

- Contribute to structured testing approaches including data quality checks and automated validation using assertions, automated checks and DevOps test pipelines.
- Continuously improve the team's development workflow by introducing appropriate tools and practices.
- Support analysts in how to build queries in SQL or DAX for PowerBI to help curate data into clear reusable data sets.
- Create and maintenance of technical documentation for the data platform's operational processes and data pipelines
- Identify opportunities where AI may improve efficiency, working under guidance from the Lead data Engineer
- Design and maintain AI Agents to automate workflows
- Collaborate closely with InfoGov and Security colleagues to embed governance into our technical processes.
- Have a desire to learn, especially latest technological advancements relevant to Data Engineering

You will have experience in:

- Delivering data solutions using Azure Synapse, Data Factory, Databricks or Microsoft Fabric-based solutions.
- Building & maintaining SQL warehouse models and analytical structures, including star schemas, ODS and Fabric semantic models.
- Designing ETL/ELT pipelines in cloud platforms using ADF, Synapse Pipelines, Databricks notebooks or Fabric.
- Assessing and improving data quality using SQL, Python and Fabric tooling.
- Optimising performance across data pipelines storage and analytic workloads. Working within data Governance, and quality frame works including implementing metadata management using Microsoft Purview.
- Working in Agile or iterative data delivery environments.
- Working with suppliers, contractors and delivery partners where required.
- Using DevSecOps practices including CI/CD, repo management and environment promotion.

You will have skills in:

- Operating production data pipelines, including monitoring, diagnosing failures and fixing issues
- Improving reliability, resilience and recoverability of data services
- Implementing CI/CD pipelines for data or analytics workloads
- Applying data quality controls such as validation, reconciliation and anomaly detection
- Handling personal or sensitive data and working in regulated environments
- Using Microsoft Azure data services in production environments
- Contributing to automation or AI-enabled processes (experience with Fabric, Copilot Studio or Azure AI Foundry is advantageous but not essential)
- Implementing API Integrations

You will have knowledge:

- Microsoft Fabric (Lakehouses, Pipelines, Semantic Models, OneLake).
- PySpark Notebooks and SQL based Analytics
- Metadata and governance tools such as Microsoft Purview.
- Splink and Machine Learning
- Azure AI Foundry, Copilot Studio and other AI tools.
- Data governance frameworks for quality, ownership and stewardship.
- Security principles including access controls, encryption and GDPR.
- DevOps and DevSecOps practises including CI/CD, branching and deployment automation.
- ITIL, STRIDE or equivalent service frameworks

The best person for this job will be (behaviours):

I make change happen

- Drive improvements across Fabric.
- Take ownership of assigned engineering deliverables and follow work through to completion
- Support continuous improvement in Fabric-based engineering practices
- Contribute ideas and experimentation with new tools and capabilities
- Champion equitable and inclusive change, considering diverse needs when shaping solutions and ways of working.

- Create a library of well documented processes and responsibilities to shape modern methodologies

I put people first

- Put the needs of people with diabetes and our colleagues at the centre of decisions, ensuring systems and processes serve them well.
- Build respectful collaborative relationships across technical and nontechnical teams..
- Communicate clearly and seek input early
- Share knowledge and support colleagues developing new data capabilities

I keep things simple

- Focus on delivering practical, usable solutions that make work easier for colleagues and reduce unnecessary complexity.
- Reduce complexity by standardising pipelines and retiring legacy components.
- Make informed decisions using metrics and evidence.
- Resolve issues early and avoid unnecessary rework.
- Simplify processes to support Fabric migration.

I am driven to know more

- Stay up-to-date with Fabric roadmap and Azure advancements.
- Seek Feedback and apply learning to improve delivery
- Use telemetry and evidence to shape decisions. Innovate with the latest and greatest data engineering practices
- Pioneer latest applications of AI

Qualifications/professional membership (if applicable):

Relevant certifications such as Azure Data Engineer, Azure Solutions Architect, SQL, Python, DevOps, Power BI or Fabric certifications are welcomed

All Data Engineers

1. DP-900
2. Either
 - a) DP-700
 - b) DP-203 (with evidence of progress on working on DP-700)

BENEFITS

We know you do more than just work. And that means you might be a parent, carer, friend, volunteer or partner.

We want to make sure that we can help you create a good balance between work and the other parts of your life.

And one way we do that is with benefits we offer you.



Annual leave

We want you to make sure you get time off to rest and relax. So, all full-time permanent employees get 25 days off a year, with bank holidays on top of this.



Connected working

We have adopted a 'connected working' way of working. This means that, for most roles, you are not required to work in an office location every day.



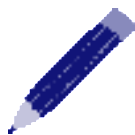
Pension

We enrol everyone into our pension and all new colleagues joining us will get information on the pension scheme. We make an employer contribution of at least 5%.



Healthcare

Our cash healthcare plan that allows you to claim back the cost of regular health appointments and treatment, like the dentist and optician.



Learning and development

We help you to continually develop and achieve your career goals, including offering a wide range of training which happens throughout the year.



Gym membership

We have a gym membership discount scheme through our cash healthcare plan provider. You can use this at a wide variety of gyms around the UK.



Our Networks

A range of active and supportive colleague networks such as the Pride network, Global Majority network and Women's network.



Early finish Friday

Early finish Friday and flexible working as part of our approach to activity-based working (not applicable to roles with fixed shift patterns).



Employee assistance programme

Employee assistance programme to give you support on any issues that come up in life.



Annual season ticket loan

Annual season ticket loan* (on completion of your probation period and if contract is permanent or longer than 12 months).



Cycle to work scheme

Cycle to work scheme.

Get in touch

Email recruitment@diabetes.org.uk

Call **0345 123 2399**

Visit diabetes.org.uk

Search **Diabetes UK** on Facebook, Twitter, YouTube and Instagram

