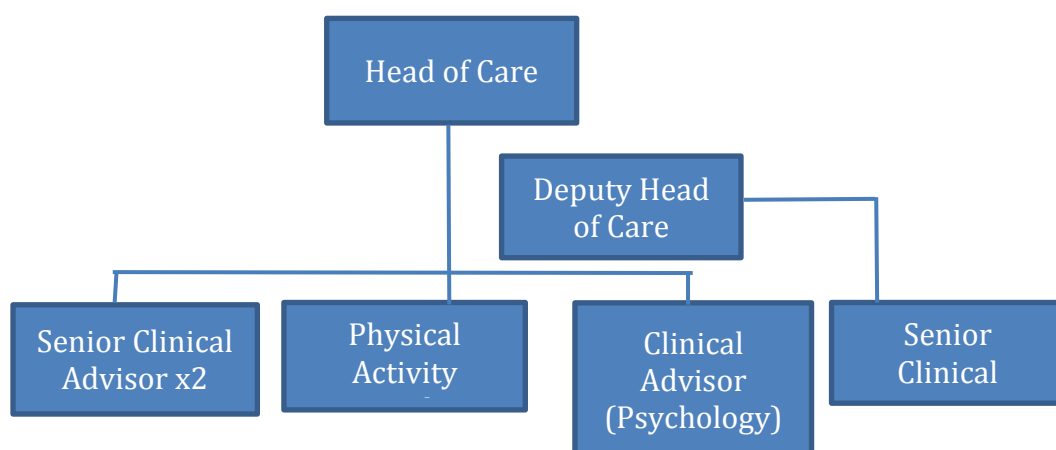


Job Title: Clinical Advisor (Psychology)

DIRECTORATE:	Policy, Campaigns and Improvement
SECTION:	Care Team
REPORTING TO:	Head of Care
CONTRACT:	Fixed term – 1 year, 21 hours a week (0.6)



WORKING RELATIONSHIPS:

Inside Diabetes UK

Policy team
Campaigns and Mobilisation team,
Improvement, Support and Innovation teams,
Engagement and Fundraising director in particular the Content team,
Operations directorate in particular the Helpline, Advocacy and Events teams, our digital education team and volunteer groups
The Council of Healthcare Professionals,
The Council of People with Diabetes.

Outside Diabetes UK

People living with or at risk of diabetes
Diabetes health care professionals
External agencies such as pharmaceutical, food retail and consumer product organisations,
Civil servants and government bodies such as NICE, Royal Colleges
Health professional bodies such as GMC and HCPC
Clinical advisers (or similar roles) in other UK health charities

OVERALL PURPOSE OF THE JOB

This role contributes to our work to ensure the emotional and psychological support for people living with Type 1 and Type 2 diabetes, their families and those at risk of diabetes is provided by health services. This includes influencing a range of external stakeholders.

This role also reviews the materials and support that teams in Diabetes UK's currently offer to identify gaps and strengthen existing resources. This includes making sure all messaging is accurate, consistent and supports Diabetes UK's overall position

MAIN DUTIES AND RESPONSIBILITIES:

- Audit the emotional and psychological resources and services provided across the charity to identify improvements and gaps
- Work with relevant teams in the charity to respond to the findings of the audit. This is likely to include:
 - Developing evidence-based resources for people with diabetes distress or diabulimia
 - Working with the Content team to identify content gaps and revisions across online and offline channels, including patient health guides
 - Developing new resources for people with diabetes to improve emotional wellbeing/mental health
 - Making sure complex clinical issues are written in a clear, accessible and compelling way to meet the needs of diverse audiences
- Research and make recommendations about new psychological approaches to support the mental health of people in the diabetes community. This includes critically reviewing evidence and building relationships with leading UK and international clinicians, academics and professional bodies
- Provide a hub of psychological expertise for the charity within the Care team
- Engage with the diabetes health care practitioners to:
 - share expertise and promote Diabetes UK's tools and resources to encourage them to improve their skills and develop overall service provision
 - identify best practice and share this with other service providers
- Provide expert guidance to the Type 1 events team to make sure that emotional and psychological support is appropriately included in events

PERSON SPECIFICATION:

The best person for this job will be able to:

- Build and maintain effective relationships with a wide range of people, including senior directors, clinicians and researchers
- Remain autonomous whilst also integral to the team
- Demonstrate creative and forward-thinking approaches to solutions
- Ensure work is completed with a high attention to detail
- Provide evidence of continued professional development including undertaking post registration courses in diabetes relevant areas
- Critically appraise research findings and apply to clinical practice
- Communicate effectively with a wide range of people
- Manage their time and prioritise effectively including when under pressure so that they meet tight deadlines

The best person for this job will have experience in:

- Writing high quality articles and patient information
- Two years or more post registration experience in health/clinical psychology
- Working with multi-disciplinary teams/ multiple stakeholders
- Supporting self-management in people with long term conditions
- Working in diabetes specialist services
- Presenting at conferences: either oral or poster presentation

The best person for this job will be:

- Pro-active with a can-do attitude
- Registered Healthcare Professional with current registration (health/clinical psychologist)
- Knowledgeable about diabetes psychology care in health services
- Proficient in MS- Word, PowerPoint and Outlook